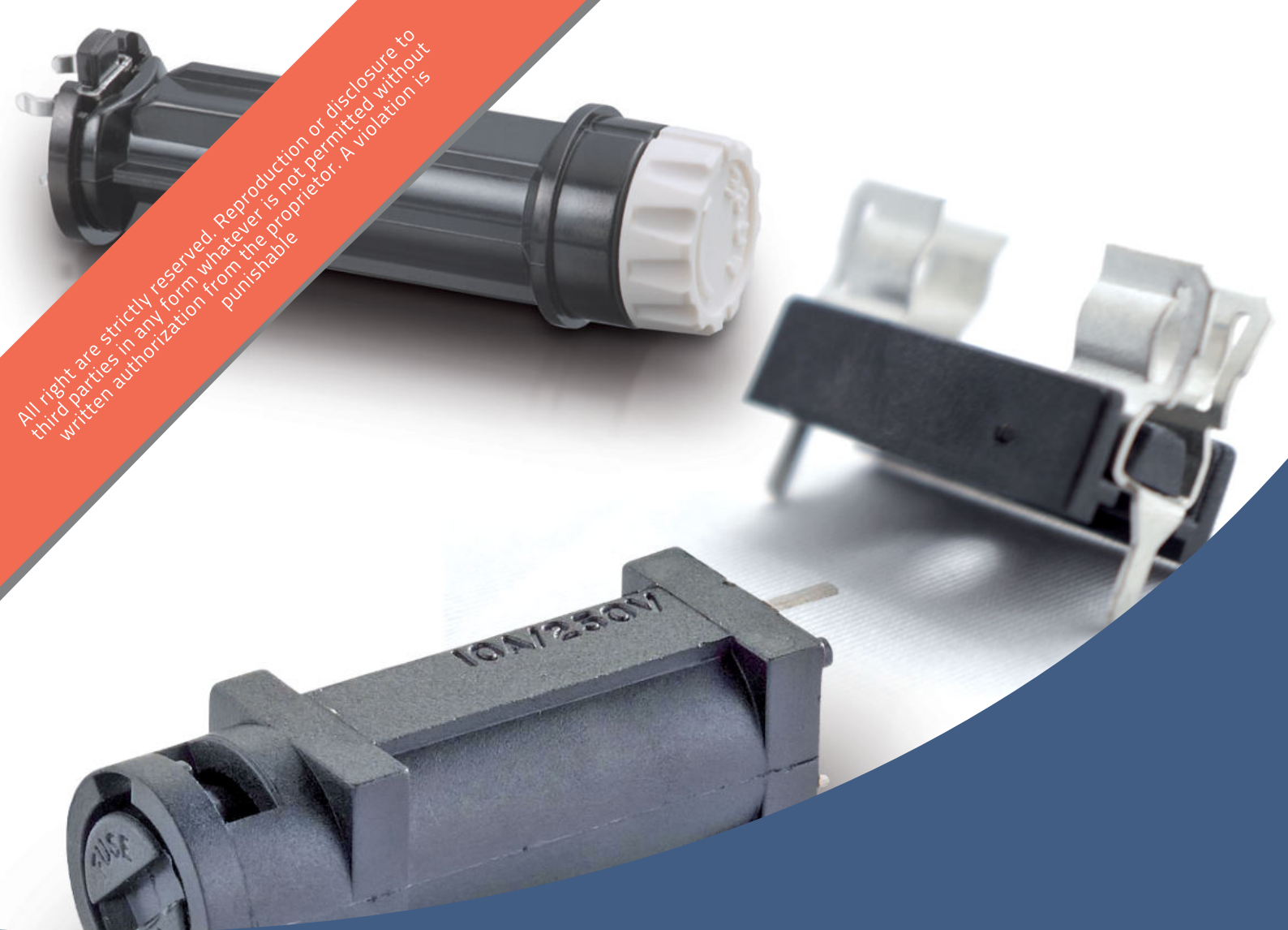


All rights are strictly reserved. Reproduction or disclosure to third parties in any form whatever is not permitted without written authorization from the proprietor. A violation is punishable.



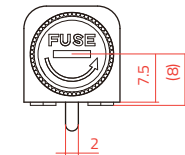
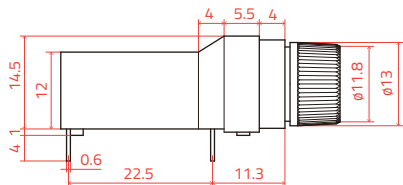
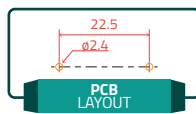
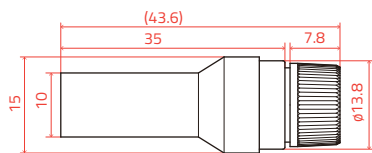
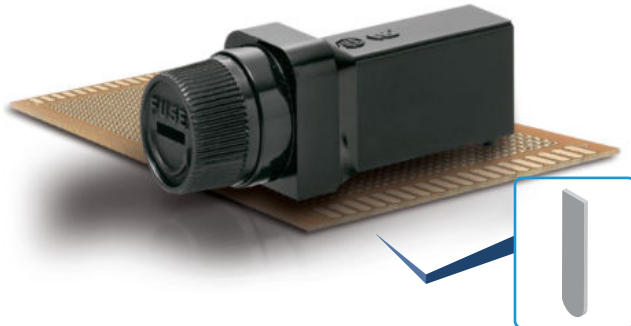
# P.C.B. FUSE HOLDERS

## PORTAFUSIBILI DA CIRCUITO STAMPATO



**Closed body horizontal fuseholder**  
Portafusibile orizzontale a corpo chiuso

CODE  
**HT6W03**



FUSE FUSIBILE	CURRENT RATING CORRENTE NOM.	VOLTAGE RATING TENSIONE NOM.	MOUNTING MONTAGGIO
<b>6,3 X 32</b> mm	<b>10 A</b>	<b>250 V</b>	<b>THT</b>



PC 1 IP 40

- ✓ **Horizontal connection**  
Connessione orizzontale
- ✓ **Bayonet connection**  
Attacco a baionetta

100 pz.

<b>Housing</b> Corpo isolante	Phenolic resin / Resina fenolica	Black / Nero	<b>UL 94 V-0</b>
<b>Handle</b> Manopola	PBT	Black / Nero	<b>UL 94 V-0</b>
<b>Operating temperature</b> Temperatura operativa	Min. -5°C / Max. +40°C @ 10 A		
<b>Withstand voltage for 60 sec.</b> Capacità di sovraccarico per 60 sec.	ac 2000 V		
<b>Insulation resistance</b> Resistenza di isolamento	> 100 MΩ @ 500 V dc		

**FUSES  
FUSIBILI**

GROUP	INT.	I. RATING I, NOM.	V. RATING TENS. NOM.	BREAKING CAPACITY CAPACITÀ DI ROTTURA	APPROVAL OMOLOGAZIONE	NORM	MATERIAL MATERIALE
<b>632.300</b>	T	32 mA ~ 30 A	250 V	35 A / 1000 A		Fabrique Norm. Norma di fabb.	Glass / Glass +EA Vetro / Vetro + PSA
<b>UL 632.300</b>	T	63 mA ~ 15 A	125 V / 250 V	35 A / 100 A 200 A / 10.000 A	cULus	UL 248-14 UL 248-1	Glass Vetro
<b>632.700</b>	T	100 mA ~ 25 A	250 V / 500 V	35 A ~ 1.000 A		Fabrique Norm. Norma di fabb.	Cer / Cer + EA Cer / Cer + PSA
<b>UL 632.700</b>	T	63 mA ~ 15 A	125 V / 250 V	35 A / 100 A 200 A / 10.000 A	cULus cULus SF	UL 248-14 UL 248-1	Cer + EA Cer + PSA
<b>632.900</b>	T	50 mA ~ 2 A	500 V	35 A / 1.000 A		Fabrique Norm. Norma di fabb.	Glass Vetro
<b>1.632.700</b>	T	32 mA ~ 32 A	250 V ~ 500 V	1500 A		Fabrique Norm. Norma di fabb.	Cer + EA Cer + PSA
<b>632.200</b>	M	32 mA ~ 25 A	250 V	35 A / 1000 A		Fabrique Norm. Norma di fabb.	Glass / Glass + EA Vetro / Vetro + PSA
<b>TDC180</b>	F	1 A ~ 13 A	32 V	6.000 A		IEC 60269-3	Ceramic Ceramica
<b>140.000</b>	F	5 A ~ 40 A	32 V	-		Fabrique Norm. Norma di fabb.	Glass Vetro
<b>632.000</b>	F	80 mA ~ 25 A	250 V	1000 A		Fabrique Norm. Norma di fabb.	Glass / Glass + EA Vetro / Vetro + PSA
<b>632.500</b>	F	100 mA ~ 25 A	500 V	1000 A		Fabrique Norm. Norma di fabb.	Cer / Cer + EA Cer / Cer + PSA
<b>UL 632.500</b>	F	100 mA ~ 20 A	125 V / 250 V	35 A ~ 10.000 A	cULus cULus SF	UL 248-14 UL 248-1	Cer + EA Cer + PSA
<b>632.500-X</b>	F	10 A ~ 30 A	500 V	20.000 A / 30.000 A	cULus cULus SF	Fabrique Norm. Norma di fabb.	Cer + EA Cer + PSA
<b>632.600</b>	F	50 mA ~ 16 A	60 V / 150 V 250 V	35 A ~ 10 A		DIN 41668 EN 60127-2-4	Glass Vetro
<b>UL 632.600</b>	F	100 mA ~ 15 A	125 V / 250 V	35 A / 100 A 200 A / 10.000 A	cULus	UL 248-14 UL 248-1	Glass + EA Vetro + PSA
<b>1632.500</b>	F	160 mA ~ 25 A	440 V / 500 V	1500 A ~ 50000 A		Fabrique Norm. Norma di fabb.	Cer + EA Cer + PSA
<b>632.100</b>	FF	100 mA ~ 25 A	250 V / 500 V	35 A / 1500 A		Fabrique Norm. Norma di fabb.	Glass / Cer + EA Vetro / Cer + PSA
<b>632.400</b>	FF	100 mA ~ 2 A	1000 V	30 kA	cULus cULus SF	Fabrique Norm. Norma di fabb.	Cer + EA Cer + PSA

All Pictures shown are for illustration purpose only. Specifications are subject to change without notice

Le immagini sono inserite a scopo illustrativo. I prodotti possono subire modifiche.



ELECTRONIC  
ELECTROMECHANICAL  
COMPONENTS  
PARTNER & DEALER



Via Monferrato, 43  
20098 San Giuliano Milanese  
ITALY

T. +39 02 55.60.61.01  
F. +39 02 55.60.71.43

[www.klemi-contact.com](http://www.klemi-contact.com)