

CODE
HT5W25

FUSE
FUSIBILE

5 x 20
mm

CURRENT RATING
CORR. NOMINALE

6.3 A

VOLTAGE RATING
TENS. NOMINALE

250 V

THT

RoHS
compliant

PC 1

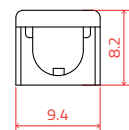
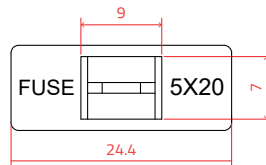
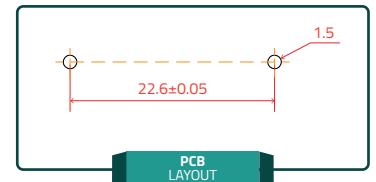
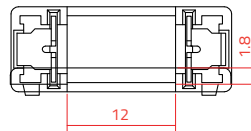
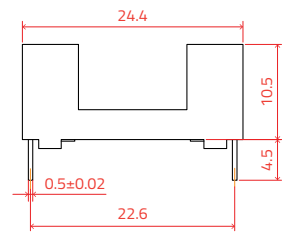
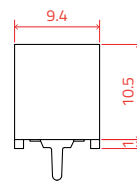
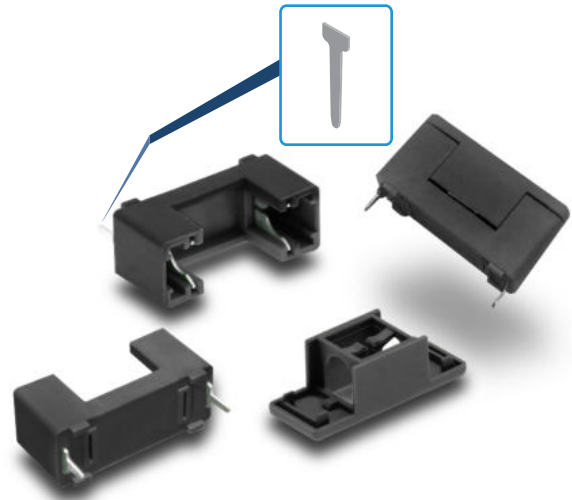
Closed-body fuse holder with cover
Portafusibili con coperchio



100 pz.

Housing Corpo isolante	PA66
Contacts Contatti	CuZn37
Color Colore	Black Nero
Rated power acceptance Potenza dissipata	1.6 W

Closed body fuse holder
Portafusibile a corpo chiuso



Klemi Contact pursues a policy of continuous development and reserves the right to make changes or updates without notice, the design, materials or technical specifications of any product, the information contained in this file/datasheet and to stop distributing any product described.

Images are included for illustrative purposes. The products are subject to change.

Klemi Contact persegue una politica di continuo sviluppo e si riserva il diritto di apportare modifiche o aggiornamenti senza preavviso alle caratteristiche tecniche, ai materiali e al design di qualsiasi prodotto. Le informazioni presenti in questo documento sono soggette a modifiche senza preavviso e Klemi Contact può interrompere la distribuzione di qualsiasi prodotto descritto. Le immagini sono utilizzate esclusivamente a scopo illustrativo



ELECTRONIC
ELECTROMECHANICAL
COMPONENTS
PARTNER & DEALER

FOLLOW US
ON SOCIAL MEDIA!



Via Monferrato, 43
20098 San Giuliano Milanese
ITALY

T. +39 02 55.60.61.01
F. +39 02 55.60.71.43

www.klemi-contact.com