

All rights are strictly reserved. Reproduction or disclosure to third parties in any form whatever is not permitted without written authorization from the proprietor. A violation is punishable.



CODE SWITCH COMMUTATORI A CODICE

ECBS

Commutatore rotativo a codice Binario e codice Gray



Multi purpose electronic code switch

- Binary or Gray-Code also complementary.
- Flexible due to many detent angles: T10 (36°); T12 (36°); T16 (22,5°) T20 (18°); T24 (15°); T32 (11,25°)
- Version V with adjustable stops.
- Many connecting versions

1.0 Const ruction		
1.1 Number of wafers max.		3 wafers
1.2 Switching combinations per wafer		Code 51, BCD · Code 52, BC D-Complement
Design D, detent angle 36°		Code 41, Binary · Code 42, Binary-Complement
Design E, Detent angle 30°		Code 76, Gray · Code 77, Gray-Complement
		Code 41, Binary · Code 42, Binary-Complement
Design H, Detent angle 22,5°		Code 76, Gray · Code 77, Gray-Complement
		Code 41, Binary · Code 42, Binary-Complement
Design N, Detent angle 18°		Code 41, Binary · Code 42, Binary-Complement
Design P, Detent angle 15°		Code 76, Gray · Code 77, Gray-Complement
		Code 41, Binary · Code 42, Binary-Complement
Design S, Detent angle 11,25°		Code 41, Binary · Code 42, Binary-Complement
1.3 Contacts		plug-in connection (standard) ribbon cable
1.4 Mounting		Central mounting

2.0 Elect rical Data	
2.1 Supply voltage	4,75...5,5 VDC
2.2 Current consumption	type. 25 mA
2.3 Output current max.	10 mA
2.4 Life expectancy	> 1 x 10 ⁶
2.5 Inverse polarity protection	up to 12 V
2.6 Outputs	„low“ < 0,6 V; „high“ > V _{cc} - 1 V

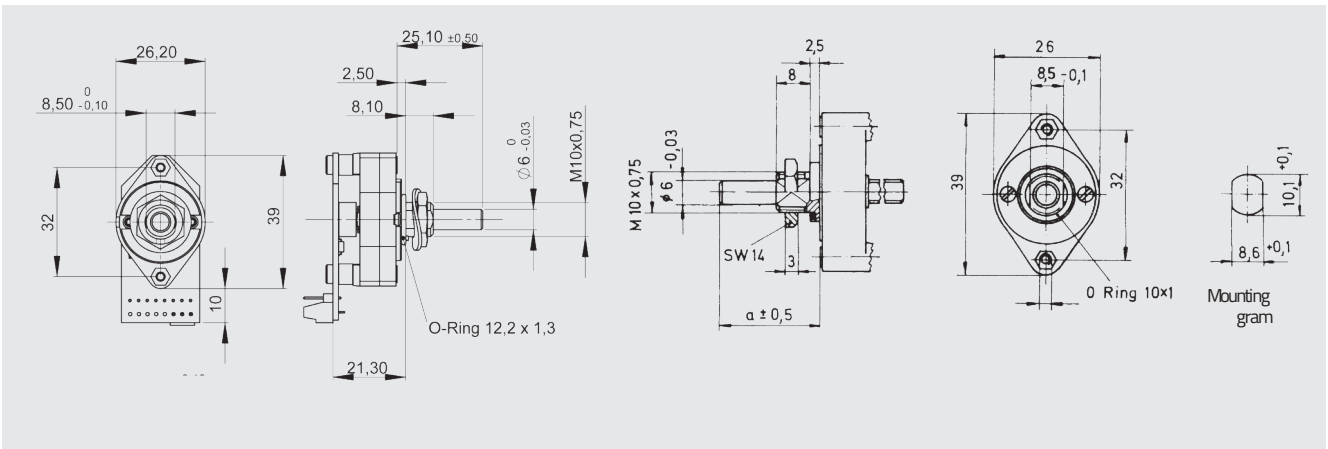
3.0 Mechanical Data	
3.1 Stops	Fixed or without stop Stop adjustable: special version V
3.2 Operating torque acc. to design	≥ 9 Ncm
3.3 Stop strength	≥ 150 Ncm
3.4 Fastening torque max.	≥ 500 Ncm
3.5 Temperature range	-25...+85 °C
3.6 Storage temperature	-40...+135 °C

4.0 Other Dat a	
4.1 Vibration resistance acc. to IEC 68-2-6	1g, 2-200 Hz, 10 Kt/min, 133 min
4.2 Shock resistance acc. to IEC 28-2-27	10g, 11 ms

Ordering Codes

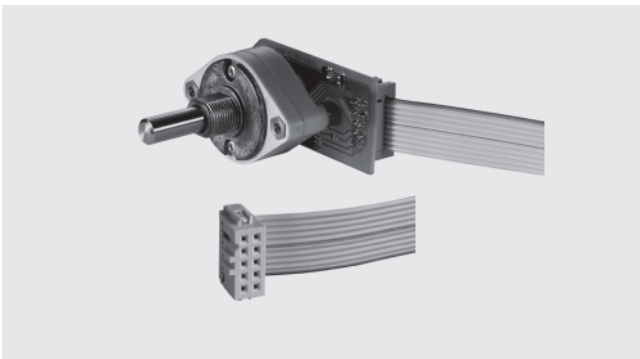
Designation of type	ECBS
1. Number of wafers	1
2. Code	41, 42, 76, 77
3. Distribution over 360°	10, 12, 16, 20, 24 oder 32
4. Shaft length	mm
5. Shaft design	A = standard, special versions page 6
6. Switching limit	00 = without stop (switching limit to XX positions)
7. Contact versions	D, E
8. Stop	V = stop adjustable
13. Watertight	WD

Maßzeichnungen · Dimensions in mm



ECBS-D · Standard

ECBS-E · Watertight Version



ECBS-D · Connector for flat ribbon cable



ECBS-E · Screw-on terminals

Klemi Contact pursues a policy of continuous development and reserves the right to make changes or updates without notice, the design, materials or technical specifications of any product, the information contained in this file/datasheet and to stop distributing any product described. Images are included for illustrative purposes. The products are subject to change.



Klemi Contact persegue una politica di continuo sviluppo e si riserva il diritto di apportare modifiche o aggiornare senza preavviso, il design, i materiali o le specifiche tecniche di qualsiasi prodotto, le informazioni contenute in questo file/scheda dati e di interrompere la distribuzione di qualsiasi prodotto descritto. Le immagini sono inserite a scopo illustrativo. I prodotti possono subire modifiche.



ELECTRONIC
ELECTROMECHANICAL
COMPONENTS
PARTNER & DEALER

FOLLOW US ON SOCIAL MEDIA!



Via Monferrato, 43
20098 San Giuliano Milanese
ITALY

T. +39 02 55.60.61.01
F. +39 02 55.60.71.43

www.klemi-contact.com