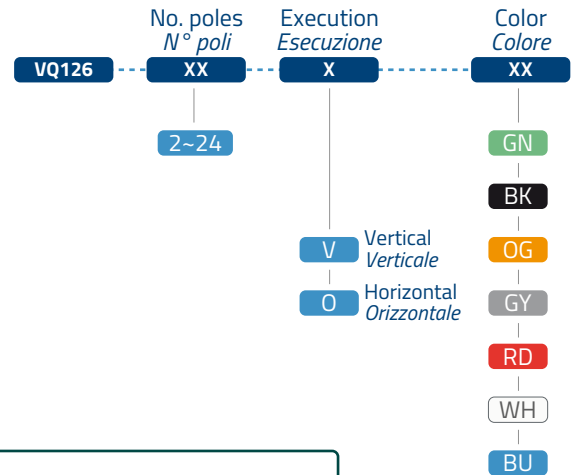
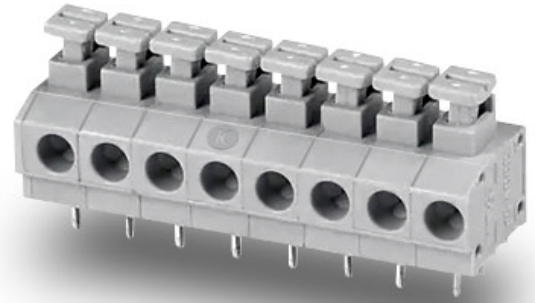


PCB Screwless terminal blocks Push-button - 5.00 mm pitch
 Morsetto da circuito stampato senza vite - passo 5.00 mm



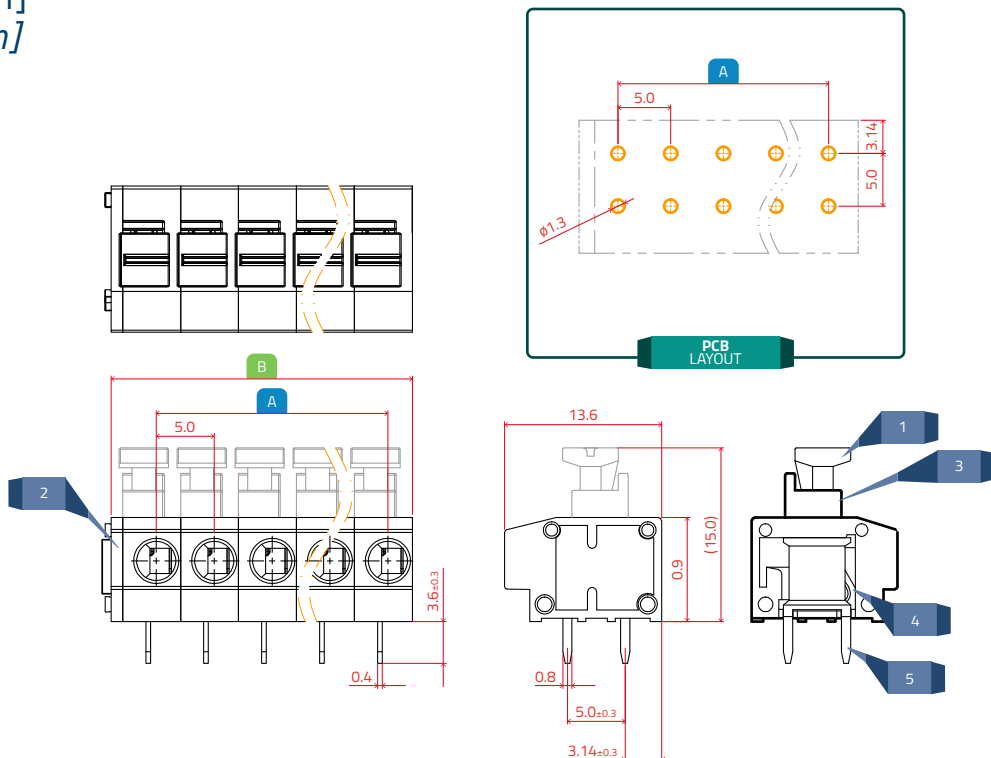
TECHNICAL CHARACTERISTICS CARATTERISTICHE TECNICHE

Pitch <i>Passo</i>	5.00 mm		
Housing <i>Corpo isolante</i>		PA66	UL 94 V-0
Color <i>Colore</i>	Green, Black, Orange, Gray, Red, White, Blue <i>Verde, Nero, Arancione, Grigio, Rosso, Bianco, Blu</i>		
Clamp material <i>Materiale del morsetto</i>		Stainless steel <i>Acciaio</i>	
Pin header <i></i>		CuZn - Sn	
Rated voltage <i>Tensione nominale</i>	UL: 300 V - IEC: 250 V		
Rated current <i>Corrente nominale</i>	UL: 5 A - IEC: 15 A		
Insulation resistance <i>Resistenza d'isolamento</i>	500 MΩ @ 500 Vdc		
Withstanding voltage for 60 sec. <i>Capacità di sovraccarico per 60 sec.</i>	2000 Vac		
Wire range <i>Cavo</i>	20 ~ 18 AWG / 1.5 mm ²		
Strip length <i>Lunghezza spelatura</i>	8 ~ 9 mm		
Operating temperature <i>Temperatura operativa</i>	-40°C / +105°C		
Soldering temperature <i>Temperatura di saldatura</i>	250°C ± 5 / 5 sec.		



DISEGNO 2D [mm] 2D DRAWING [mm]

POLES	A	B
2	11 ± 0.30	5 ± 0.15
3	16 ± 0.30	10 ± 0.15
4	21 ± 0.30	15 ± 0.15
5	26 ± 0.30	20 ± 0.15
6	31 ± 0.50	25 ± 0.15
7	36 ± 0.50	30 ± 0.20
8	41 ± 0.50	35 ± 0.20
9	46 ± 0.50	40 ± 0.20
10	51 ± 0.50	45 ± 0.20
11	56 ± 0.50	50 ± 0.30
12	61 ± 0.70	55 ± 0.30
13	66 ± 0.70	65 ± 0.30
14	71 ± 0.70	70 ± 0.30
15	76 ± 0.70	75 ± 0.30
16	81 ± 0.70	80 ± 0.30
17	86 ± 0.70	85 ± 0.30
18	91 ± 0.70	90 ± 0.30
19	96 ± 0.70	95 ± 0.30
20	101 ± 1.00	100 ± 0.30
21	106 ± 1.00	105 ± 0.30
22	111 ± 1.00	110 ± 0.30
23	116 ± 1.00	115 ± 0.30
24	121 ± 1.00	120 ± 0.30



PCB Screwless terminal blocks Push-button - 5.00 mm pitch
Morsetto da circuito stampato senza vite - passo 5,00 mm

All Pictures shown are for illustration
purpose only. Specifications are subject to
change without notice

Le immagini sono inserite a scopo
illustrativo. I prodotti possono subire
modifiche.



ELECTRONIC
ELECTROMECHANICAL
COMPONENTS
PARTNER & DEALER



Via Monferrato, 43
20098 San Giuliano Milanese
ITALY

T. +39 02 55.60.61.01
F. +39 02 55.60.71.43

www.klemi-contact.com